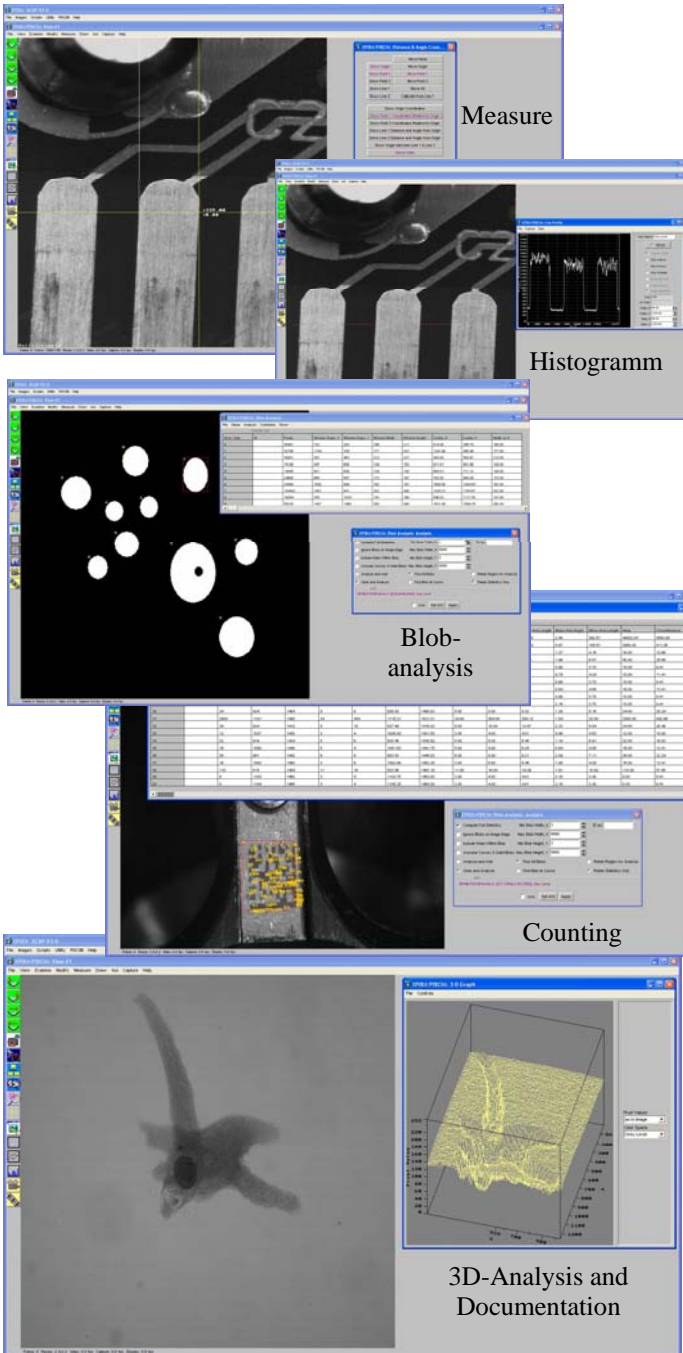


## Software Application Samples:



**..WIR MACHEN DETAILS SICHTBAR**

**... zu allen Produkten bieten wir umfangreiches Zubehör:**

- Beleuchtungssysteme
- Lichtleiter, Ringlichter etc.
- Framegrabber mit entspr. Software
- Standard Objektive C/CS Mount
- UV-Objektive
- Netzteile
- Kabelkonfektionierung
- Motorisierung von Zoom Systemen
- Mikroskopkoppler für Kameras
- Monitore, Monochrom oder Farbe
- Software
- Stative und Kamerahalterungen
- Lichtwellenleiter Videübertragungssysteme



**14 Megapixel**  
35mm Film Resolution  
**CMOS Camera**



**CAMERA**  
**Link**

EHD imaging GmbH  
Zum Rennplatz 15  
49401 Damme  
Telefon: 05491-2090  
Fax: 05491-2098  
E-Mail: info@ehd.de

**ehd**  
i m a g i n g

# 14 Megapixel CameraLink CMOS Camera

## Specifications:

- 14 Megapixel 3048 x 4560 resolution
- 8µm square pixel, sensor size 36x24mm
- 35m Film Format
- 12 bit x 4 ADC
- 10 ~ 60MHz sampling
- Full resolution at 4 fps (80MPix/s)
- Programmable windowing and sub sampling
- CameraLink and GigE Interfaces
- Electronic Rolling Shutter
- 65dB Wide Dynamic
- 5VDC low power, small package
- F-Mount housing or PCB version

## Applications:

- Microscopy
- Machine Vision
- High resolution Graphics
- Medical Imaging
- Non-contact Measurements
- Motion Capture
- Photo ID Systems
- Other Industrial and Scientific Applications

## Sensitivity :

Figure 13. IBIS4-14000 Spectral Response Curve

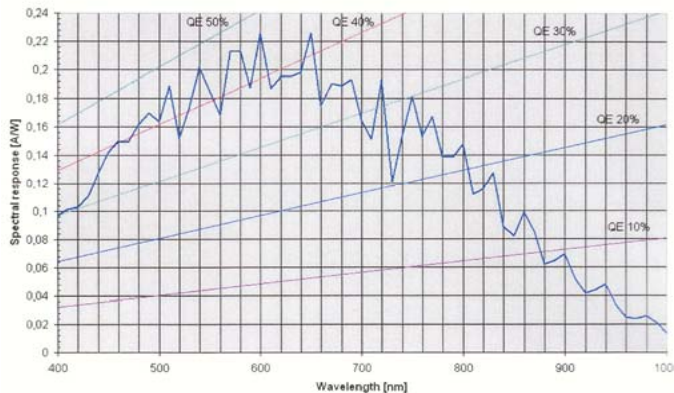
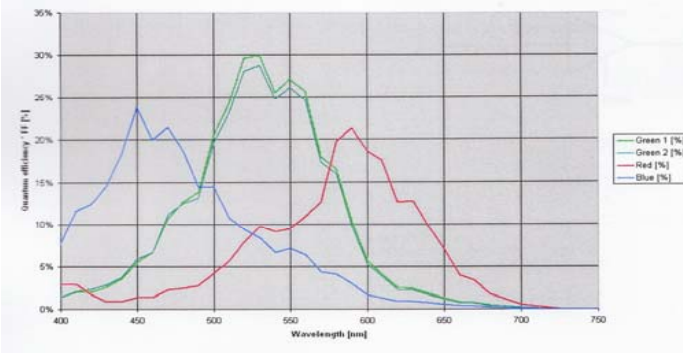


Figure 4. Color Filter Response Curve



## 3048x4560 Pixel, 8µm Pitch

The SI-14000 is an all-digital CMOS camera that delivers 13.9 Million pixels of resolution and is capable of running at up to 4 frames/s at its full 3048x4560 resolution and over 800 frames/s at 128x128 resolution. The Pixel is a classic 3-transistor active pixel. The sensor has a QE of 40% between 500 and 700nm and a dynamic range of 1871:1 (65.4dB). The 36x24mm imaging area can be covered using F-Mount optics.

## Complete Package incl. Framegrabber and Software

The SI-14000 is also available as a complete package consisting of camera head, EPiX EL1 CL-PCI-Express Grabber, XCAP Lite Application Software, 2m CL-Cable, Power-Supply. A Windows or Linux SDK (Programming Libraries) and Ready-To-Run Image Processing & Analysis Application Programs are optional available for Image Measurement, Blob-Analysis, Partial Tracking, Video recording and many more.

## Camera Architecture Overview

The SI-14000 consists of 7 major components sections, which are build on two circuit boards.

1. **14 Megapixel Sensor**
2. **Digital Clock Synthesizer**
3. **12-Bit x 4 ADC Digitizing System**
4. **Microprocessor**
5. **CameraLink Interface**
6. **Power Regulation**
7. **Trigger & Clock Controls**

