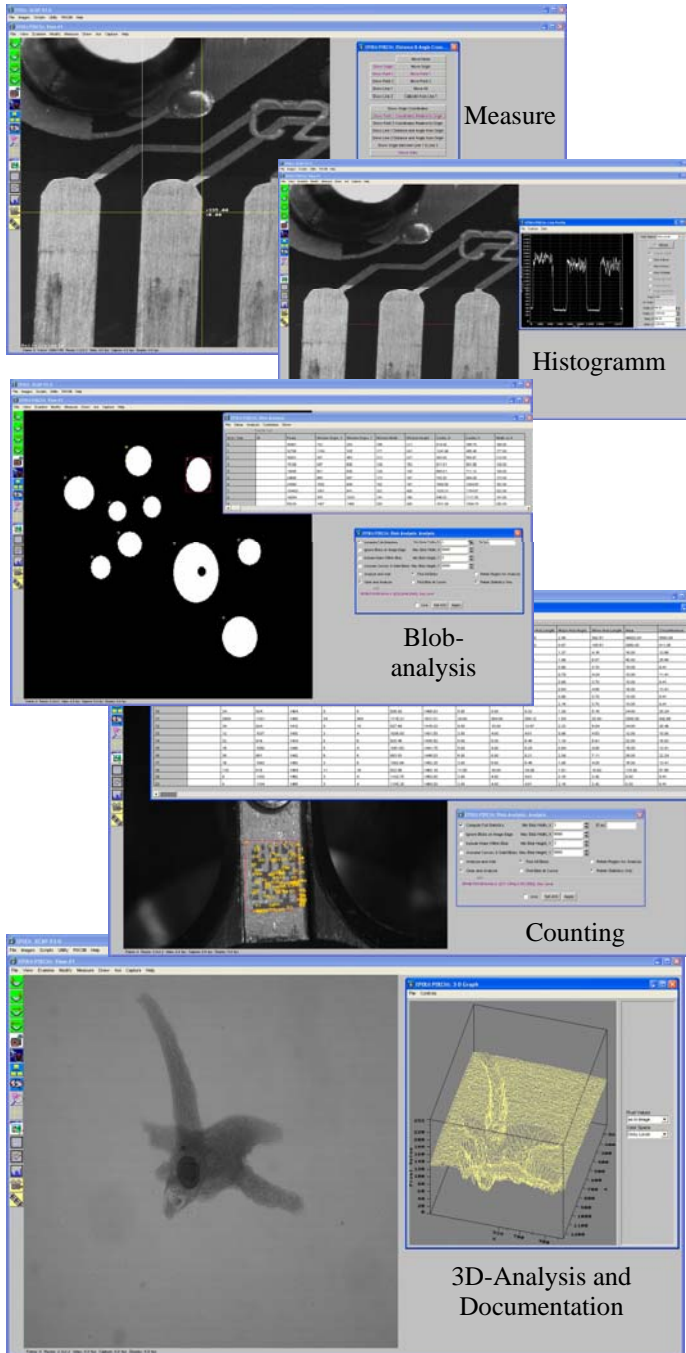


## Software Application Samples:



**..WIR MACHEN DETAILS SICHTBAR**

... zu allen Produkten bieten wir umfangreiches Zubehör:

- Beleuchtungssysteme
- Lichtleiter, Ringlichter etc.
- Framegrabber mit entspr. Software
- Standard Objektive C/CS Mount
- UV-Objektive
- Netzteile
- Kabelkonfektionierung
- Motorisierung von Zoom Systemen
- Mikroskopkoppler für Kameras
- Monitore, Monochrom oder Farbe
- Software
- Stative und Kamerahalterungen
- Lichtwellenleiter Videübertragungssysteme

EHD imaging GmbH  
Zum Rennplatz 15  
49401 Damme  
Telefon: 05491-2090  
Fax: 05491-2098  
E-Mail: info@ehd.de



**4 Megapixel**  
12µm Square Pixel  
**Monochrome CMOS Camera**



**CAMERA**  
**Link**

**ehd**  
i m a g i n g

# 4 Megapixel CameraLink CMOS Camera

## Specifications:

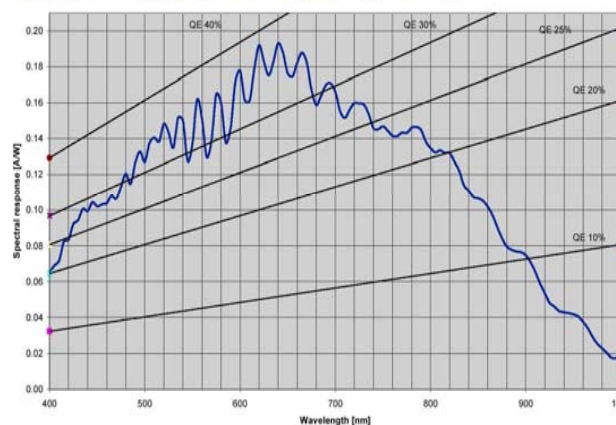
- 4 Megapixel 3048x4560 resolution
- 12µm square pixel, sensor size 24,6x24,6mm
- 35mm Format; F-Mount
- 12 bit x 2 Tap
- 100MP/s nominal (2 x 50MHz)
- 1000fps High Speed binning and windowing
- Full resolution at 15 fps (65 MHz)
- Programmable windowing and sub sampling
- Trigger Exposure to 2ns ( 1/500.000 )
- CameraLink and GigE Interfaces
- Full Frame Shutter Overlapping
- 66dB Wide Dynamic
- 5VDC low power, small package
- F-Mount housing or PCB version

## Applications:

- Microscopy
- High Speed Recording ( up to 1000fps)
- Laser Profiling
- Machine Vision
- Semiconductor Inspection
- High resolution Graphics
- Medical Imaging
- Non-contact Measurements
- Motion capture and Analysis
- Photo ID Systems
- Other Industrial and Scientific Applications

## Sensitivity

Spectral Response Curve (Monochrome)



## Camera Architecture Overview

The SI-4000 camera consists of 7 major components sections, which are build on two circuit boards.

1. 4.2 Megapixel Sensor
2. Digital Clock Synthesizer
3. 12-Bit x Dual Tap
4. Microprocessor
5. CameraLink Interface
6. Power Regulation
7. Trigger & Clock Controls

## 2048x2048 Pixel, 12µm Square Pixel

The SI-4000 is an all-digital CMOS camera that delivers 4.2 Million pixels of resolution and is capable of running at up to 15 frames/s at its full 2048x2048 resolution and over 3000 frames/s at 160x120 resolution. The Pixel is a classic 6-transistor pixel. The sensor has a QE of 60% between 500 and 700nm and a dynamic range of 2000:1 (66dB). The 24x24mm imaging area can be covered using F-Mount optics.

## Complete Package incl. Framegrabber and Software

The SI-4000 is also available as a complete package consisting of camera head, EPIX EL1 CL-PCI-Express Grabber, XCAP Lite Application Software, 2m CL-Cable, Power-Supply. A Windows or Linux SDK (Programming Libraries) and Ready-To-Run Image Processing & Analysis Application Programs are optional available for Image Measurement, Blob-Analysis, Partical Tracking, Video recording and many more.

