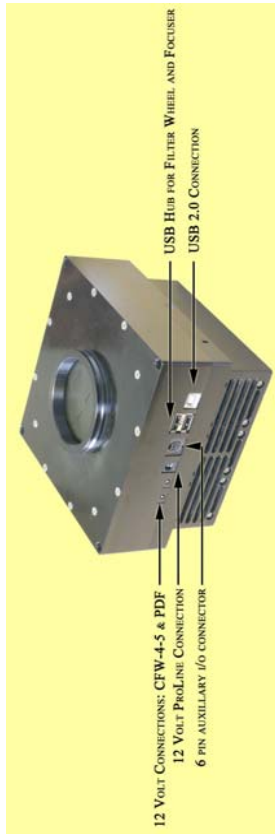


# EHD16803DR Housing and Connectors



## Special System Features:

- Cooling 5°C per Minute ( only 10min cooling for dT 50°C !
- Very short backfocus
- Lens adjustment capabilities
- 8MHz@16Bit; 13e noise only
- 1 MHz@16Bit; 9e noise only
- Small size
- No Icing effects on window guaranteed !



## *EHD16803DR*

Cooled 16 Megapixel Camera  
For Digital Radiography



### EHD IMAGING GMBH

EHD imaging GmbH  
Zum Rennplatz 15  
D-49401 Damme  
Phone: +49-5491-2090  
Fax: +49-5491-2098



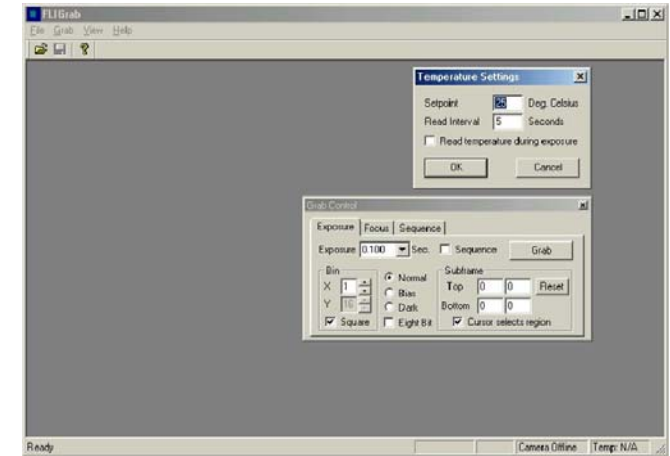
## Typical Camera Performance:

Download speeds	10 Megapixel/s
CCD Readout Noise	Typ. 9e
Spectral Response	200—1000nm
Number of Pixels	4096x4096
Pixel Size	9.0µm
Camera Cooling dT	~ 60K
QE	60% at 550nm
Power consumption	12V
Storage Temp. Range	-50°C to 100°C
Operating Temp. Range	-40°C to 50°C
Relative humidity	95%
Standard Camera Weight	2,5 Kg
Standard camera dimens.	158 x 158 x 102 mm

## Camera Features:

- Selectable download speeds up to 12 Megapixel/s
- On Board Frame Buffer, 32Mb
- Field upgradeable firmware
- USB2.0 High Speed Serial Interface
- 65mm Apertur 6 Leaf Shutter
- 3 Stage Thermoelectrical cooling, dT~55K
- Dual hermetically sealed Chambers for Sensor and Electronics
- Low noise 16 Bit operation
- Guaranteed sensor alignment and orthogonality
- Wide range of supported Sensors: Kodak, Fairchild, E2V, SiTe
- Optional Special coatings (UVAR etc.)
- Remote shutter triggering (TTL)
- Sensor optional with or without cover slip
- Installation of customer owned sensors
- Quartz, sapphire, fused silica camera windows

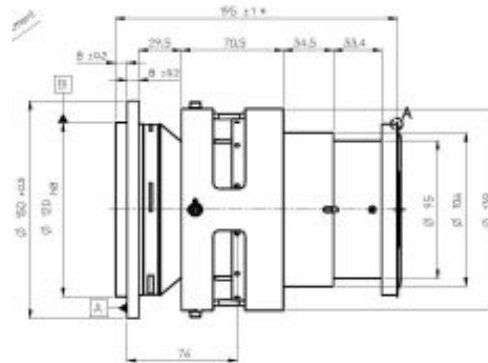
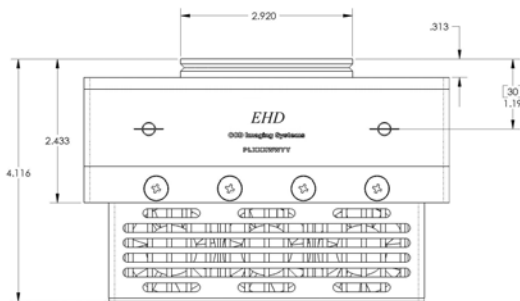
## Camera-Control Software incl. SDK



## Applications:

- Chemoluminescence
- Bioluminescence
- Gel-Analysing
- Life-Science
- Astronomy
- Laser-Science

## Linor XV-Heligon 4K Lens



The EHD16803DR is compatible to the Linor XV-Heligon 4K lens, to view a phosphor screen of 43x43cm.

## EHD IMAGING GMBH

EHD imaging GmbH  
Zum Rennplatz 15  
D-49401 Damme

Phone: +49-5491-2090  
Fax: +49-5491-2098