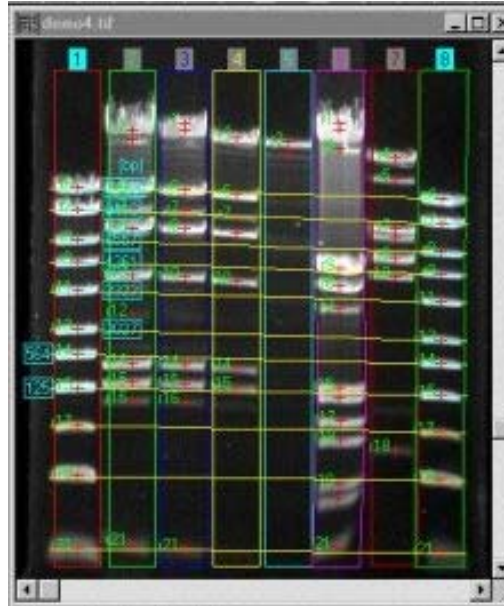


Additional Features of the Camera:

- All major components are CMC machined
- Photo-etched stainless-steel shutters a **field-serviceable**
- Shutter can also be manual opened for optical sensor inspection.
- Sensor hermetically sealed from dust and moisture in a separate chamber, filled with Argon.
- Customized download speeds selectable by software.
- Big camera capabilities in a small housing.
- Cooling design achieves 50-55°C under ambient.
- The internal frame buffer allows an image to be quickly read out and downloaded without introducing any artifacts to the image at an speed.
- Several mounting options are available



EHD IMAGING GMBH

EHD imaging GmbH
Zum Rennplatz 15
D-49401 Damme

Phone: +49-5491-2090
Fax: +49-5491-2098



true 16 Bit Camera Chemo- und Bioluminescence

1024 X 1024 Pixel



Downloads at almost 2 fps in High Speed Mode !

Sensor E2V
Enhanced CCD47-10

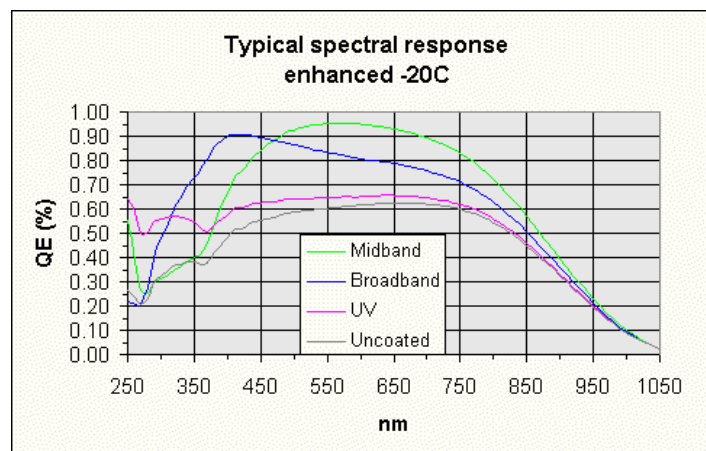
True (16Bit)
65.000 Greylevels
Resolution
(12Bit = 4096 Greylevels)

Camera Specification:

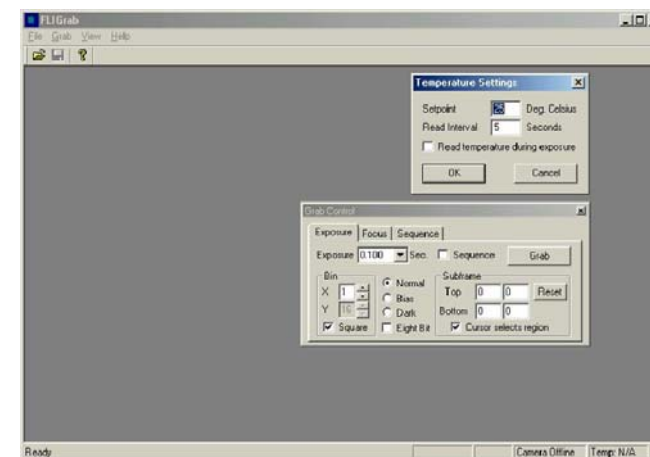
Camera	Sensor	Full Well Cap.	Readout Noise	Pixel	Pixelsize	Typ
SC4710	E2V CCD47-10	100.000e	2 e	1024x1024	13 µ	Back-Illuminated
Pixel Binning	1x1 to 16x16 on chip					
Exposure time	0,025s to 173 Std. in 0,01s Steps					
Frame Size	Fullframe, Subframe, Focus Mode					
Cooling	3 stage thermoelectric cooler with forced air. Max 40°C under ambient controlled by software					
Camera Head	Black anodized aluminium, Size: 94mm(W) X 94mm(H) X 139mm (L) without Van, Weight: 1,7 kg					
Operating Environment	Temperature: -40°C to 50°C. Rel.Humidity: 95%					
PC-Interface	External High-Speed USB2.0-Interface					
Software	FLIGrab Cameracontrol-Software, SDK for Windows and Linux, MathLab driver					

Features SC4710:

- Complete 3-stage TE cooled Camera System
- Enhanced CCD47-10 Sensor
- Fast USB2.0 Interface
- Internal Frame Buffer of 32MB
- Download approx. 2 fps
- Integrationtime from 25ms to 173h (8ms/incr.)
- Full Well up to 100.000 electrons
- QE: > 90% max.
- Dynamic: >83 dB
- Sensor Size 13,3(H) x 13,3(V)mm
- Sensor Diagonal 18,8 mm
- Broadband, Midband or UVAR-Coating available
- Extern changeable Shutter Blades
- Fan, low vibration calibrated
- Control Software
- Windows SDK, Linux SDK, Math Lab Driver
- Optical Connector: Nikon F-Mount



Camera-Control Software FLIgrab



Applications:

- Chemoluminescence
- Bioluminescence
- Gel-Analysing
- Life-Science

EHD IMAGING GMBH

EHD imaging GmbH
 Zum Rennplatz 15
 D-49401 Damme

Phone: +49-5491-2090
 Fax: +49-5491-2098