

## Additional Features of the Camera:

- All major components are CNC machined
- Photo-etched stainless-steel shutters a **field-serviceable**
- Shutter can also be manual opened for optical sensor inspection.
- Sensor hermetically sealed from dust and moisture in a separate chamber, filled with Argon.
- Customized download speeds selectable by software.
- Big camera capabilities in a small housing.
- Cooling design achieves 50-55°C under ambient.
- The internal frame buffer allows an image to be quickly read out and downloaded without introducing any artifacts to the image at an speed.
- Several mounting options are available



## 11 Megapixel Camera

For X-RAY applications

**PL-11000M**

**4008 X 2672 Pixel**



**Sensor Kodak  
KAI-11002 Progressive Scan**

### EHD IMAGING GMBH

EHD imaging GmbH  
Zum Rennplatz 15  
D-49401 Damme

Phone: +49-5491-2090  
Fax: +49-5491-2098

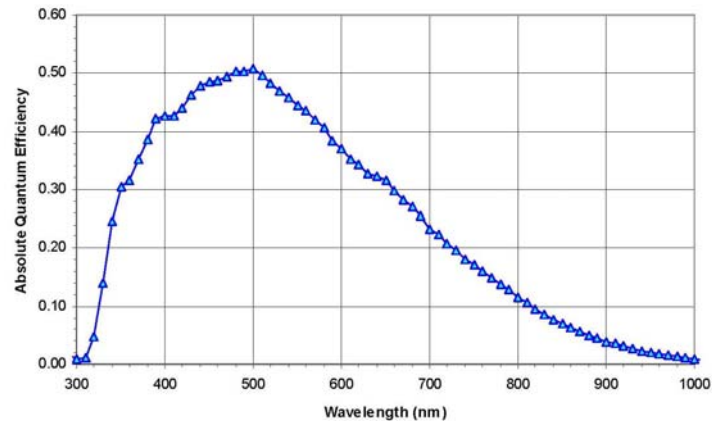


# Camera Specification:

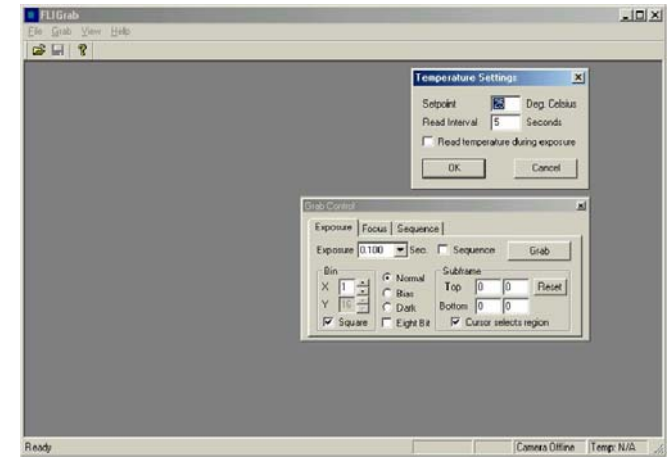
Camera	Sensor	Full Well Cap.	Readout Noise	Pixel	Pixelsize	Typ
PL-11000M	KAI-11002	60.000e	<10 e	4008x2672	9 µ	InterLine
<b>Pixel Binning</b>	1x1 to 16x16 on chip					
<b>Exposure time</b>	0,025s to 173 Std. in 0,01s Steps					
<b>Frame Size</b>	Fullframe, Subframe, Focus Mode					
<b>Cooling</b>	3 stage thermoelectric cooler with forced air. Max 40°C under ambient controlled by software					
<b>Camera Head</b>	Black anodized aluminium, Size: 157mm(W) X 157mm(H) X 101mm (L) without Van, Weight: 2,5 kg					
<b>Operating Environment</b>	Temperature: -40°C to 50°C. Rel.Humidity: 95%					
<b>PC-Interface</b>	External High-Speed USB2.0-Interface					
<b>Software</b>	FLIGrab Cameracontrol-Software, SDK for Windows and Linux, MathLab driver					

## Features:

- Complete 3-stage TE cooled Camera System
- KAI-11002 sensor with microlenses
- Fast USB2.0 Interface
- Internal Frame Buffer of 32MB
- Integrationtime from 25ms to 173h (8ms/incr.)
- Full Well up to 60.000 electrons
- QE: 50% max.
- Dynamic: 66 dB
- Sensor Size 37.25(H) x 25.7(V)mm
- Sensor Diagonal 43.3 mm
- Extern changeable Shutter Blades
- Fan, low vibration calibrated
- Control Software
- Windows SDK, Linux SDK, Math Lab Driver
- Optical Connector: Nikon F-Mount



## Camera-Control Software FLIgrab



## Applications:

- X-Ray
- Gel-Analysing
- Life-Science

### EHD IMAGING GMBH

EHD imaging GmbH  
 Zum Rennplatz 15  
 D-49401 Damme  
 Phone: +49-5491-2090  
 Fax: +49-5491-2098