

EHD IMAGING GMBH

# NIR Camera

Compact USB3.0; IMX-178 monochrome Sensor

## SCM-178M-NIR 6.3 Megapixel Camera

EHD imaging GmbH  
Zum Rennplatz 15  
D-49401 Damme

Phone: +49-5491-2090  
Fax: +49-5491-2098

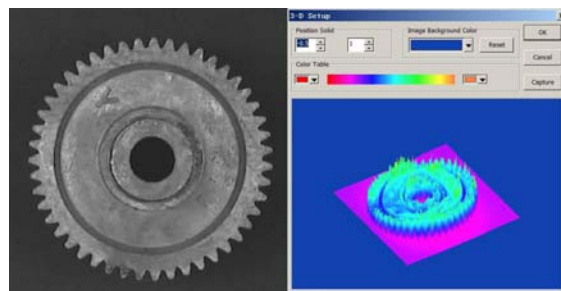
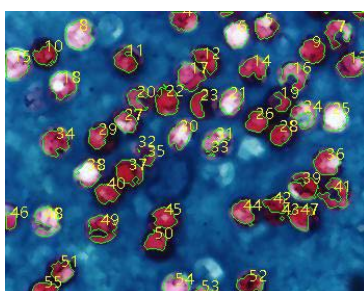
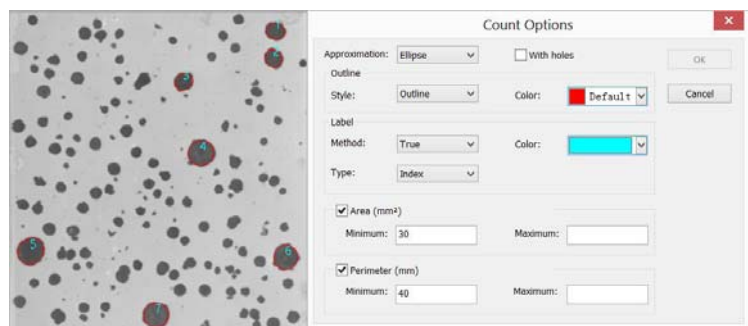
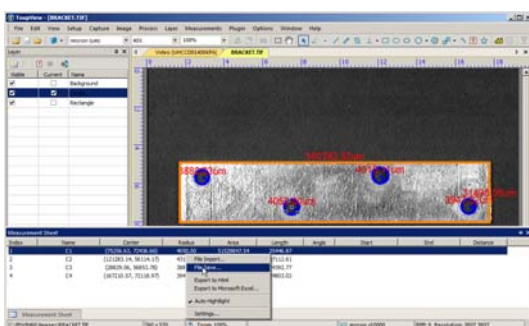
e-mail: [info@ehdimaging.de](mailto:info@ehdimaging.de)

[www.ehd.de](http://www.ehd.de)



- Sony 1/1.8" CMOS Sensor
- 3072x2048 Pixel
- 15 fps at Full Resolution
- Global Shutter
- Sensitivity upto 1100nm
- USB3.0
- CNC aluminium alloy housing
- EHDView Imaging Software

This camera includes a complete ImageProcessing Software with measurement capabilities



## Specifications: SCM-178M-NIR Camera

<b>Image Sensor</b>	1/1.8" , 6.3 Megapixel Sony Exmor CMOS
<b>Resolution</b>	3072 x 2048 Pixel
<b>Pixel Size (H x V) <math>\mu\text{m}</math></b>	2.4 x 2.4
<b>Spectral Range</b>	380nm—1100nm
<b>Sensitivity</b>	475mv with 1/30
<b>Shutter Mode</b>	Electronic Shutter
<b>Sync System</b>	Internal Sync.
<b>Exposure Control</b>	244 $\mu\text{s}$ ~ 2000ms
<b>Frame Rate</b>	15fps @ Full Res; 26fps @ Half Res
<b>Lens Mount</b>	C/Mount
<b>Operating Temperatur</b>	-10°C ~ 50°C
<b>Power source</b>	USB powered 5Vdc
<b>Control API</b>	Native C/C++, C#, VB.Net, Direct Show, TWAIN, LabView
<b>Dimensions ( WxHxD) mm</b>	D=100mm, L=100.3mm
<b>Operating System</b>	Windows XP/Vista/7/8/10 (32&64bit)

